



YLI ELECTRONIC

# Five-range LED KEY Switch

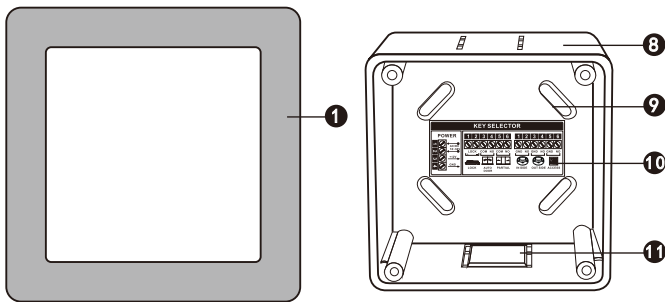
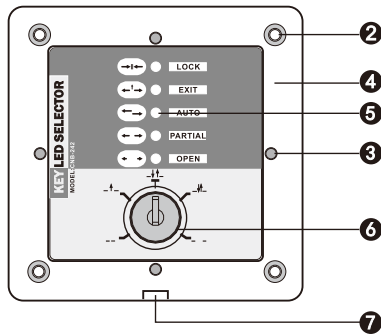
## Model: YAD-141FS



### 1 Safety Instruction

! Thanks for your purchasing, please refer to the following before using.

### 2 Overview



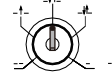
- 1 stainless steel panel      5 indicator      9 fixing screw x4pcs
- 2 fixing screw x4pcs(bottom)      6 function key      10 wiring label
- 3 fixing magnet x4pcs(Panel)      7 hole for cover remove      11 The punch line x3pcs
- 4 main panel      8 bottom cap

### 3 Feature

- This product is unidirectional command switch for automatic door accessory using. Manually issue automatic/exit/lock/open/partial instructions to switch functions.
- With 86 Panel, special design with bottom panel, convenient for different installation.
- Adopt wide voltage to connect different power supply with auto-door controllers.

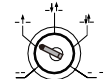
### 4 Function

AUTO



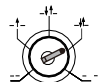
Internal and external probe are effective. Working hours with normal business.

EXIT



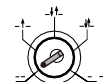
External probe is lose effectiveness and electric lock locked automatically while external access controller and internal probe are available. Only insider can get in by swiping card. Internal probe is effective, people can get out. Be used for clearing up a gathering place.

PARTIAL



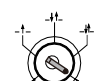
External and internal probes are effective. Door maintains half-open and shut back. Working hours with normal business.

LOCK



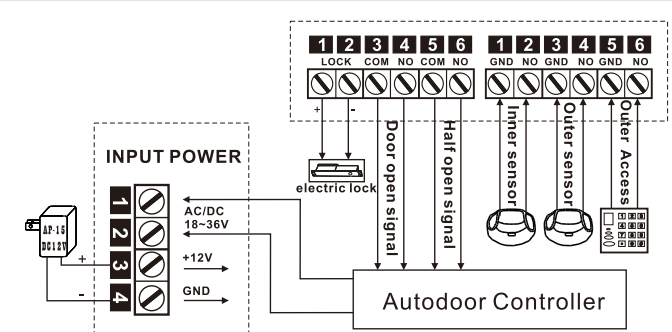
All probe and access controller are lose effectiveness. electric lock locked automatically. People inside and outside can not enter in. Be used for preventing thieves at night or on holidays periods.

OPEN



All probe and access controller are lose effectiveness. Door keeps fully open. For emergency using.

### 5 Wiring



Note: When input voltage is DC12V, Please connect into POWER terminal 3 and 4. (as picture shown)

### 6 Parameters

Input Power	AC/DC18V~36V
Mechanical working life	over 75000 times
Functions	5ranges
Display Screen	TFT34x25mm
Dimension	92x92x46mm
Hole Dimension	85x85x43mm